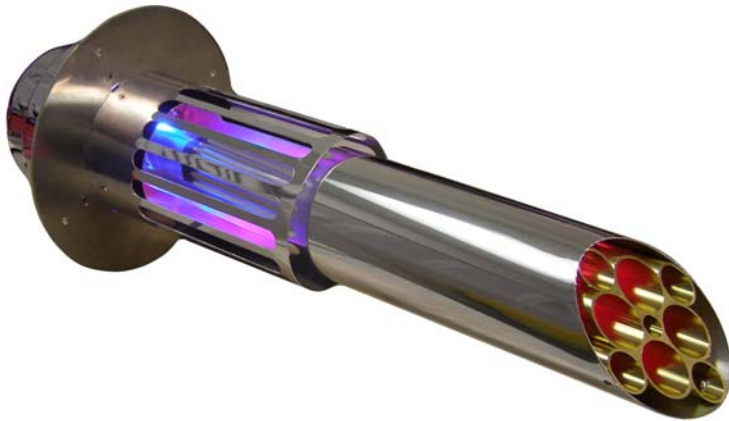


# RGF<sup>®</sup> Guardian Air REME<sup>®</sup>

## AC/Heat Duct Air Purification System **COMMERCIAL GRADE** A REME<sup>®</sup> Advanced Oxidation Technology

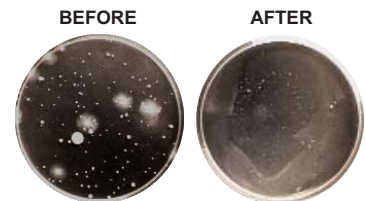
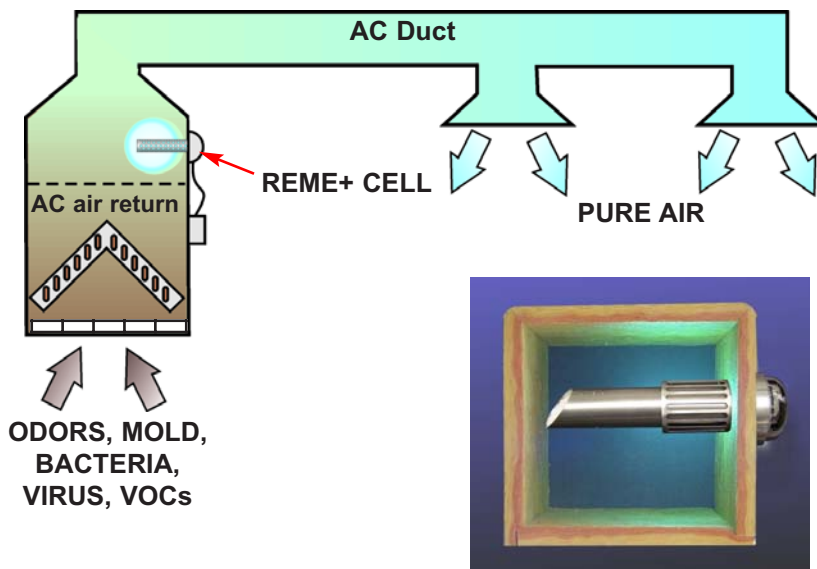


Patent Pending

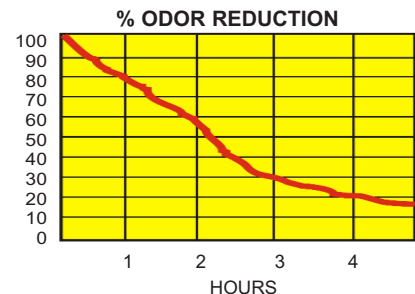
The **Guardian Air REME<sup>®</sup>** by RGF<sup>®</sup> is designed to eliminate sick building syndrome risks by reducing odors, air pollutants, VOCs (chemical odors), smoke, mold bacteria and viruses\*. The HVAC-REME<sup>®</sup> Cells are easily mounted into air conditioning and heating systems air ducts where most sick building problems start. When the HVAC system is in operation the HVAC-REME<sup>®</sup> Cell creates an Advanced Oxidation Plasma consisting of: Ionized Hydro-peroxides, Super oxide ions and Hydroxide ions. All are friendly oxidizers. By friendly oxidizers we mean oxidizers that revert back to oxygen and hydrogen after the oxidation of the pollutant.

### Why Use RGF's REME<sup>®</sup> Technology ?

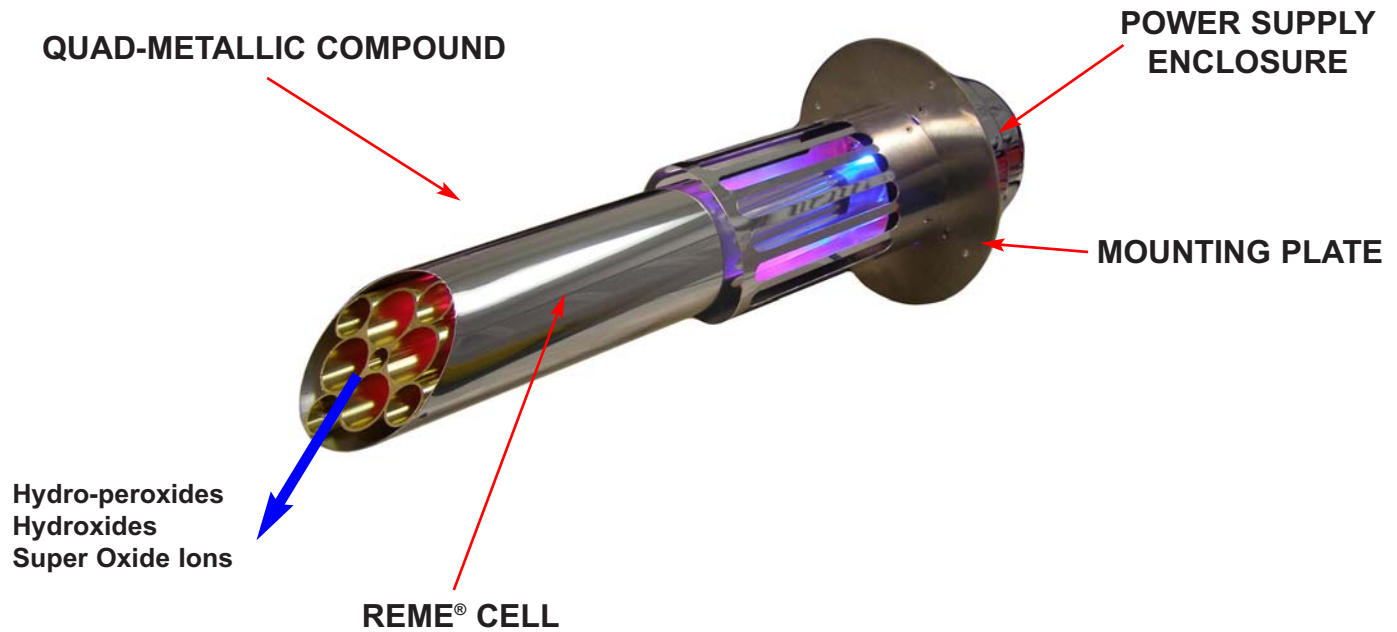
With a REME<sup>®</sup> Generator Advanced Oxidation System, micro-organisms can be reduced by over 99%. Gases, VOCs, odors and particulate (dust) can also be reduced significantly. Charged Advanced Oxidation Plasma will be carried throughout for a continuous purification process and a quick kill of newly introduced odors or microbials.



Actual lab tests showing up to 97% reductions of airborne bacteria and mold



The process produces a charged plasma of hydro-peroxides, super oxide ions and hydroxides to purify the air. With the RGF HVAC-REME Cell Advanced Oxidation System, micro-organisms can be reduced up to 99.99%. Gases, VOCs and odors can also be reduced significantly, and the room will have ionized hydro-peroxides, super oxide ion and hydroxides which will help give your room fresh, clean and odor free air.



•Hydro-peroxides distribution:	distributed thru air handler
•Super Oxide Ion distribution:	distributed thru air handler
•Hydroxide Ion distribution:	distributed thru air handler
•Installation:	installed in hvac duct or plenum
•Electrical:	100-240 VAC 50/60 Hz Auto switching power supply
•Materials:	Polymers
•Warranty:	2 Year Parts
•REME Cell Replacement	Recommended after 25,000 hrs

The **Guardian Air REME®** unit size is scaled to accommodate the various air flow rates of different HVAC systems. Locate the air blower size in cubic feet per minute (CFM) of the HVAC system you are intending to install the system in, then pick the model number that corresponds to that flow rate. **Note:** It is recommended these units be installed by a licensed electrician.

<i>Item #</i>	<i>HVAC Air Blower Size</i>	<i>Dimensions</i>	<i>Ship Wt.</i>
REME-HVAC-305	1,000 to 6,500 CFM	12" probe / 5.5 Dia." plate	3 lbs.
REME-HVAC-305-HO	6,500 to 10,000 CFM	12" probe / 5.5 Dia." plate	3 lbs.



**RGF Environmental Group, Inc.**  
 3875 Fiscal Court West Palm Beach, Florida 33404  
 800 842-7771 fax 561 848-9454 www.rgf.com